

# Comfort Heat

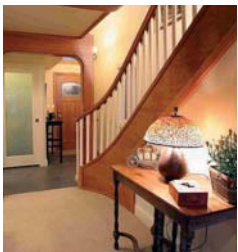
Specialists in Underfloor and  
Ceiling Heating



Providing options of  
Prime Heating, Background  
Heating and Warm Floor Surfaces

Call - 0800 917 9036  
sales@comforheat.co.uk  
www.comforheat.co.uk

# Carbon ink element heating



**Even Temperature** - It provides an even temperature throughout the room all year.

**Safe** - It is totally safe for family with no hot spots or danger areas.

**Silent** - It is both silent and invisible and has no odour.

**Environment friendly** – No emission gases and reduced electrical usage. It provides for a cleaner air since there is no dust or other particle disturbance as with convection or fan assisted heating.

**Wet Floors** - It assists with the safety problems of wet floors and spilled items.

**Maintenance free** – It is maintenance free, once laid and tested it remains undisturbed and requires no servicing.

**Space** – No valuable wall or floor space is taken up by the product.

**Condensation** – It assists in resolving any problems with condensation.

**Thermal barrier** – Installed with an insulation barrier to ensure all heat produced is reflected up into the room.



## ***Floor finish options***

*Tiles, Limestone, Slate, Timber, Engineered timber, Laminate, Karndean, Amtico or Carpet*

# Loft and Garage Conversions

Having been converted to increase available space with the home it is important not to lose some of the new area to conventional radiators etc

**Floor Heating** - Carbon ink elements or eco floor cable can provide heating in the open areas of the floor space.

**Ceiling Heating** – Carbon ink elements placed between the roof timbers and covered by conventional plasterboard can utilise otherwise unused areas of the conversion to provide subtle and temperature controllable heat throughout the whole area.

**Both of the above systems enjoy the usual benefits of**

**Safety** - It is totally safe for family use with no hot spots or danger areas.

**Even Temperature** – It provides an even temperature throughout the room all year.

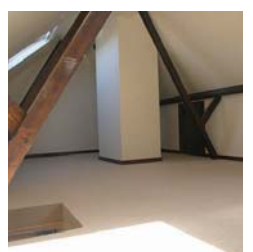
**Silent** – It is both silent and invisible and has no odour.

**Space** – There are no restricted areas of use with the product.

**Condensation** – It assists in resolving any condensation problem.

**Maintenance free** – There is no maintenance, once fitted and tested it remains undisturbed and requires no servicing.

**Environmentally friendly** – No emission gases and reduced electrical usage. It provides for a cleaner air since there is no dust or other particle disturbance as with convection or fan assisted heating.



*There are no restrictions on the ceiling decoration or floor surface covering of your choice.*

# Ecofloor Cable Heating



**Safety** – When correctly installed it is totally safe for family use with no hot spots or danger areas.

**Range of temperature output** – It can provide performance ranging from a warm floor surface to main room heating dependant on the floor insulation and room heat loss levels.

**Even Temperature** – It provides an even temperature throughout the room all year.

**Silent** – It is both silent and invisible and has no odour.

**Space** – There are no restricted areas of use within the house and it is ideal for retrospective installation.

**Maintenance free** – there is no maintenance, once fitted and tested it remains undisturbed and requires no servicing.

**Environmentally friendly** – No emission gases and reduced electrical usage. It provides for cleaner air since there is no dust or air particle disturbance as with convection or fan assisted heating.

**Thermal Barrier** – Can be installed with a new or make use of existing insulation depending on heat level required.



## ***Floor finish options***

*Tiles, Limestone, Porcelain, Marble, Terracotta, Slate etc.*

## **O.J.Electronics OCD2-1999 combined thermostat/timer unit**



Air temperature only, Floor temperature only or combined Air and Floor sensing control options are available with this unit.

There are four variable time periods available in each 24 hours.

The timer can be set for individual or repetitive daily use, or for Monday – Friday with separate weekend setting.

There is a large easy read digital display with background lighting for easy reading at all times.

There is single button short and long term program overriding facilities.

The unit is fully recessed and is no more obtrusive than a standard light switch.

Temperatures can be set in either C or F scale and the clock in either 12 or 24 hour reading.

**CALL - 0800 917 9036**  
**www.comforheat.co.uk**  
**sales@comforheat.co.uk**

## Products

### Carbon ink Element

Originally an ICI developed concept it has been in continuous manufacture in the UK for almost 30 years. With over 5 million square meters having been produced during this period, the majority has been exported and extensively used in Scandinavia, mainland Europe, Canada and South Africa. During this period the manufacturer has been awarded the Queens award for Export on two occasions.

### Ecofloor LD cable

Twin conductor 4mm cable with earth screen protection manufactured at one of the most modern European factories, using the best quality materials in production and pre-fixed to nylon matting to ensure safe and uniform installation.

### OCD2-1999 combined thermostat timer unit

Supplied by one of the largest European manufacturers of electrical control units the OCD2-1999 is designed specifically for variable temperature heating systems. Easy to use software allows clients to set and adjust the unit in conjunction with a clear digital display.

### Insulation

A range of extruded polystyrene insulation boards ranging in thickness from 6mm – 30mm ensure that the correct level of insulation is available to produce the level of heat required by the client in the various installation areas.

## Guarantee

### Carbon ink element

10 year Manufacturer Guarantee on element continuous performance.

### Ecofloor LD cable matting

10 year Manufacturer Guarantee on cable continuous performance.

### O.J.Electronics OCD2-1999 unit

2 year Manufacturer guarantee on continuing performance.

In the unlikely event of failure within that period, a visit will be arranged to assess the cause and authorise the necessary repair including rectification of any floor damage.

A written guarantee will be issued within 7 days of completion of the installation.

## Installation is carried out within the map area

### High Wycombe

Victoria House  
Desborough Road  
High Wycombe HP11 2NF

### Reading

Atlantic House  
Imperial Way  
Reading RG2 0TD

### Basingstoke

Eastland 11  
London Road  
Basingstoke RG21 4AW

### Fareham

Parallel Business Centre  
Cams Hill  
Fareham PO16 8AB



### Richmond

Parkshot House  
Kew Road  
Richmond TW9 2PR

### Croydon

Lansdowne Building  
Lansdowne Road  
Croydon CR9 2ER

### Guildford

Parallel House  
London Road  
Guildford GUI 2AB

### Horsham

The Courtyard  
Worthing Road  
Horsham RH12 1SL

Call - 0800 917 9036 or e-mail [sales@comfortheat.co.uk](mailto:sales@comfortheat.co.uk)  
[www.comfortheat.co.uk](http://www.comfortheat.co.uk)